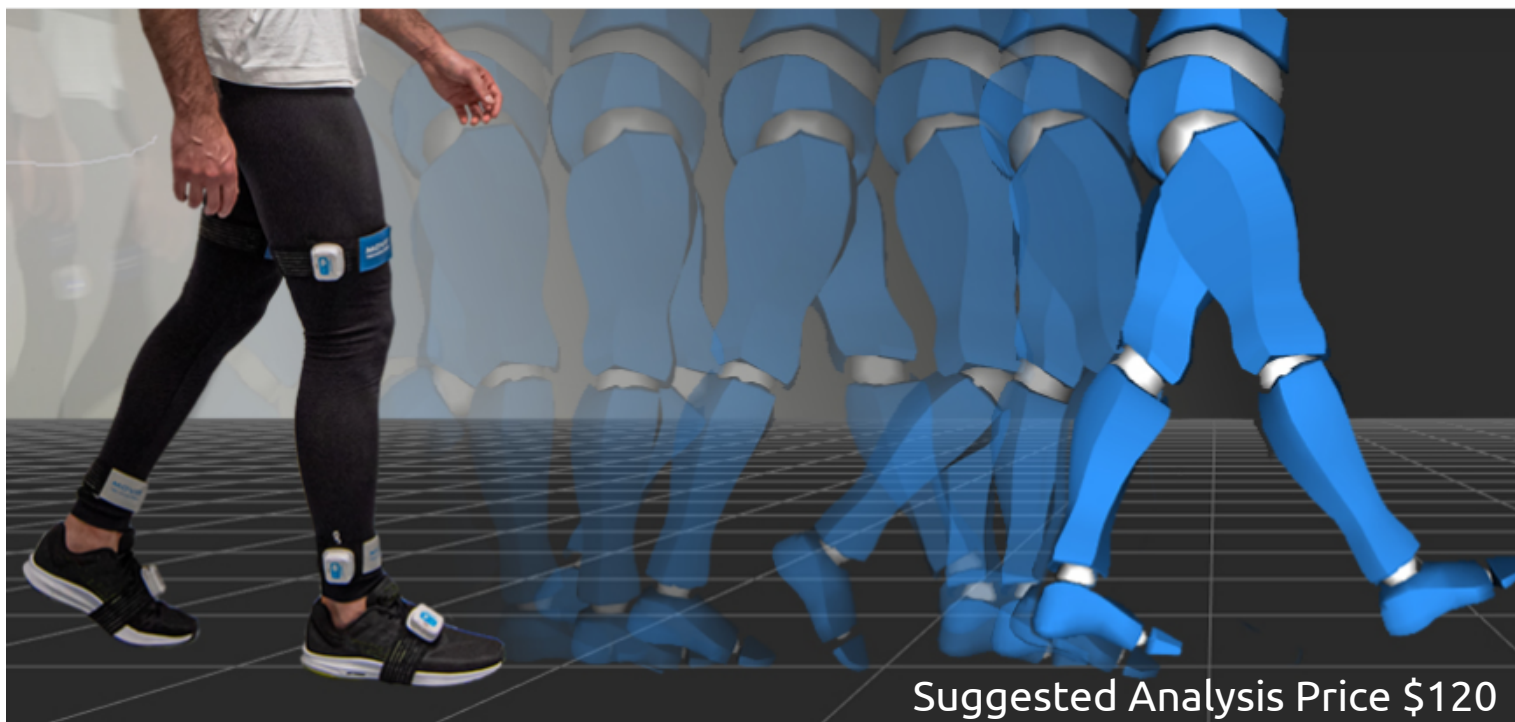


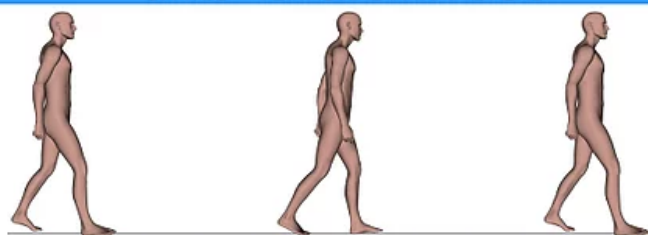
MOVIT - 3D Motion Capture



Suggested Analysis Price \$120

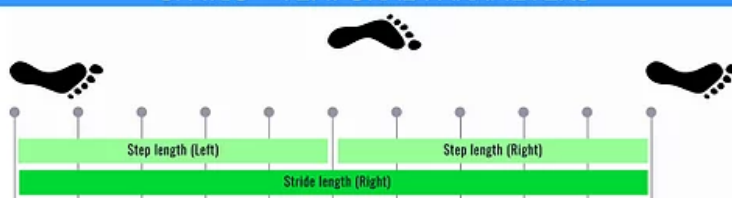
MOVIT is using 7 IMU sensors that allow to capture the real body motion during the walking with a real 3D animation. It generates an automatic report showing all the spatio-temporal parameters, symmetry indexes, joint angles of pelvis, hip, knee and ankle. Also used with synchronized camera.

SPATIO - TEMPORAL PARAMETERS



	RIGHT HEALTHY LIMB	LEFT HEALTHY LIMB	DIFFERENCE
Stride time (s):	1.12 ± 0.08	1.11 ± 0.00	0.01
Stance phase time (s):	0.65 ± 0.07	0.66 ± 0.02	-0.01
Swing phase time (s):	0.47 ± 0.01	0.45 ± 0.02	0.02
Single support time (s):	0.45 ± 0.02	0.48 ± 0.01	-0.02
Double support time (s):	0.19 ± 0.07	0.18 ± 0.01	0.01
Step time (s):	0.57 ± 0.03	0.52 ± 0.00	0.05
Stance phase percentage (%):	57.63 ± 2.02	59.43 ± 1.86	-1.79
Swing phase percentage(%):	42.37 ± 2.02	40.57 ± 1.86	1.79
Single support percentage (%):	40.68 ± 3.05	43.17 ± 0.67	-2.50
Double support percentage (%):	16.96 ± 4.88	16.25 ± 1.19	0.70
Step time percentage (%):	50.76 ± 2.13	46.99 ± 0.00	3.76

SPATIO - TEMPORAL PARAMETERS



	RIGHT HEALTHY LIMB	LEFT HEALTHY LIMB	DIFFERENCE
Stride length (m):	1.33 ± 0.07	1.32 ± 0.04	0.01
Step length (m):	0.66 ± 0.02	0.64 ± 0.03	0.03
Speed (m/s):	1.19 ± 0.03	1.19 ± 0.03	-0.00
Cadence (steps/min):	107.62 ± 7.26	108.50 ± 0.07	-0.88
Shock impact shank (g):	2.66 ± 0.18	2.82 ± 0.25	-0.15
Shock impact foot (g):	3.32 ± 0.25	3.21 ± 0.28	0.11

JOINT ANGLES

